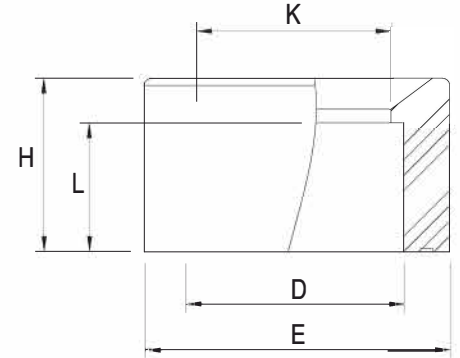


# Reducing Socket



mm / inch	Code 1 / Code 2	K	H	L	D / ASTM	E	PN	Box
25-20 / -	133602 / -	16	16	16	20 / -	25 / -	16	250
32-25 / -	133604 / -	21	21	21	25 / -	32 / -	16	1000
40-32 / -	133603 / -	28	28	28	32 / -	40 / -	16	600
50-32 / -	133601 / -	28	28	28	50 / -	32 / -	16	200
50-40 / -	1336095 / -	38	38	38	50 / -	40 / -	16	250
63-32 / -	1336053 / -	30	30	30	63 / -	32 / -	16	200
63-40 / 2" - 1 1/2"	1336052 / 1336052ASTM	38	38	38	40 / 42.2	63 / 60.3	16	200
63-50 / 2" - 1 1/4"	133605 / 133605ASTM	43	43	43	50 / 48.3	63 / 60.3	16	252
75-40 / 2 1/2" - 1 1/4"	1336062 / 1336062ASTM	38	38	38	40 / 42.2	75 / 73	16	150
75-63 / 2 1/2" - 2"	133606 / 133606ASTM	57	57	57	63 / 60.3	75 / 73	16	150
90-75 / 3" - 2 1/2"	133607 / 133607ASTM	67	67	67	75 / 73	90 / 88.9	16	88
110-90 / -	133608 / -	81	81	81	90 / -	110 / -	16	48
75-50 / 2 1/2" - 1 1/2"	1336061 / 1336061ASTM	40	40	40	50 / 48.3	76 / 73	16	150
90-63 / 3" - 2"	1336071 / 1336071ASTM	56	56	56	63 / 60.3	90 / 89.9	16	88
110-75 / -	1336081 / -	68	68	68	75 / -	110 / -	16	48
110-63 / -	1336082 / -	56	56	56	63 / -	110 / -	16	48
125-90 / -	1336091 / -	82	82	82	90 / -	125 / -	16	36
125-110 / -	133609 / -	102	102	102	110 / -	125 / -	16	36
140-90 / -	133612 / -	80	80	80	90 / -	140 / -	16	23
140-110 / -	1336121 / -	100	100	100	110 / -	140 / -	16	23
140-125 / -	1336122 / -	117	117	117	125 / -	140 / -	16	23
160-90 / -	133610 / -	81	81	81	90 / -	161 / -	10	15
160-110 / -	133611 / -	100	100	100	110 / -	160 / -	10	15
160-140 / -	13366111 / -	132	132	132	140 / -	160 / -	10	15
200-160 / -	133672 / -	152	152	152	160 / -	200 / -	10	14
200-140 / -	133671 / -	130	130	130	140 / -	200 / -	10	14
225-200 / -	133681 / -	191	191	191	202 / -	226 / -	10	12
225-160 / -	133682 / -	154	154	154	160 / -	226 / -	10	12
250-225 / -	133683 / -	215	215	215	225 / -	250 / -	10	8
315-280 / -	1336086 / -	273	273	273	280 / -	315 / -	10	3
315-250 / -	133693 / -	245	245	245	250 / -	315 / -	10	3
280-250 / -	133686 / -	249	249	249	250 / -	280 / -	10	